

# **PORTFOLIO**

**2013-2016**

# Year 1

We had three projects which are Streetgraphic, Cabinet of Curiosity, and Earth Artifacts.

## Streetgraphic

I was considering what makes a street and referring to some designs which inspired me.

## Cabinet of Curisoty

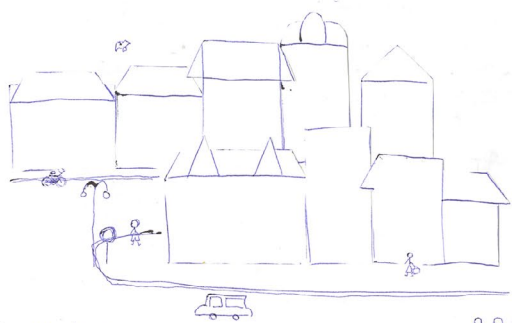
What should I keep in a box?

## Earth Artifacts

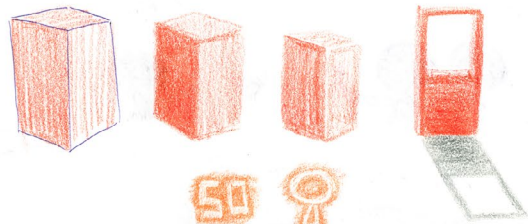
Deliver messages into space to introduce Earth.

I created sound by myself and made a showreel:

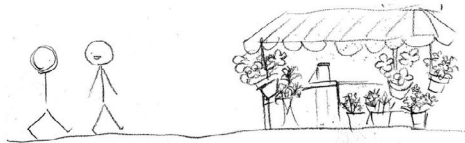
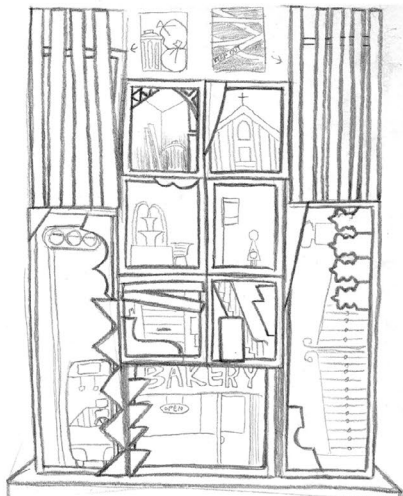
[https://www.youtube.com/watch?v=gkRS\\_pIXHo0](https://www.youtube.com/watch?v=gkRS_pIXHo0)



Eric Ravilov



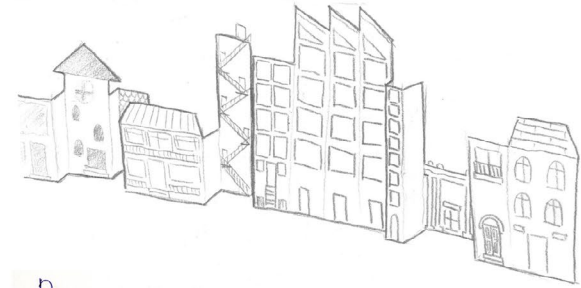
Edward Pawden



Mimmo Rotella

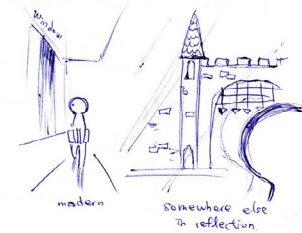
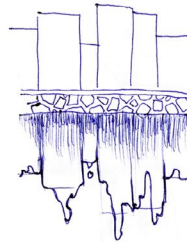


Jean Dubuffet

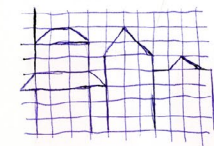


Picasso

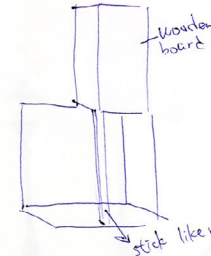
Girl Before A Mirror



Dan Fern

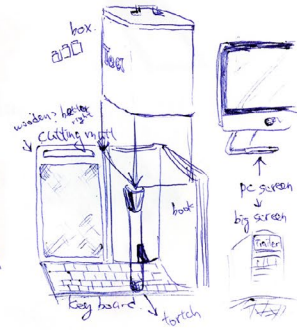


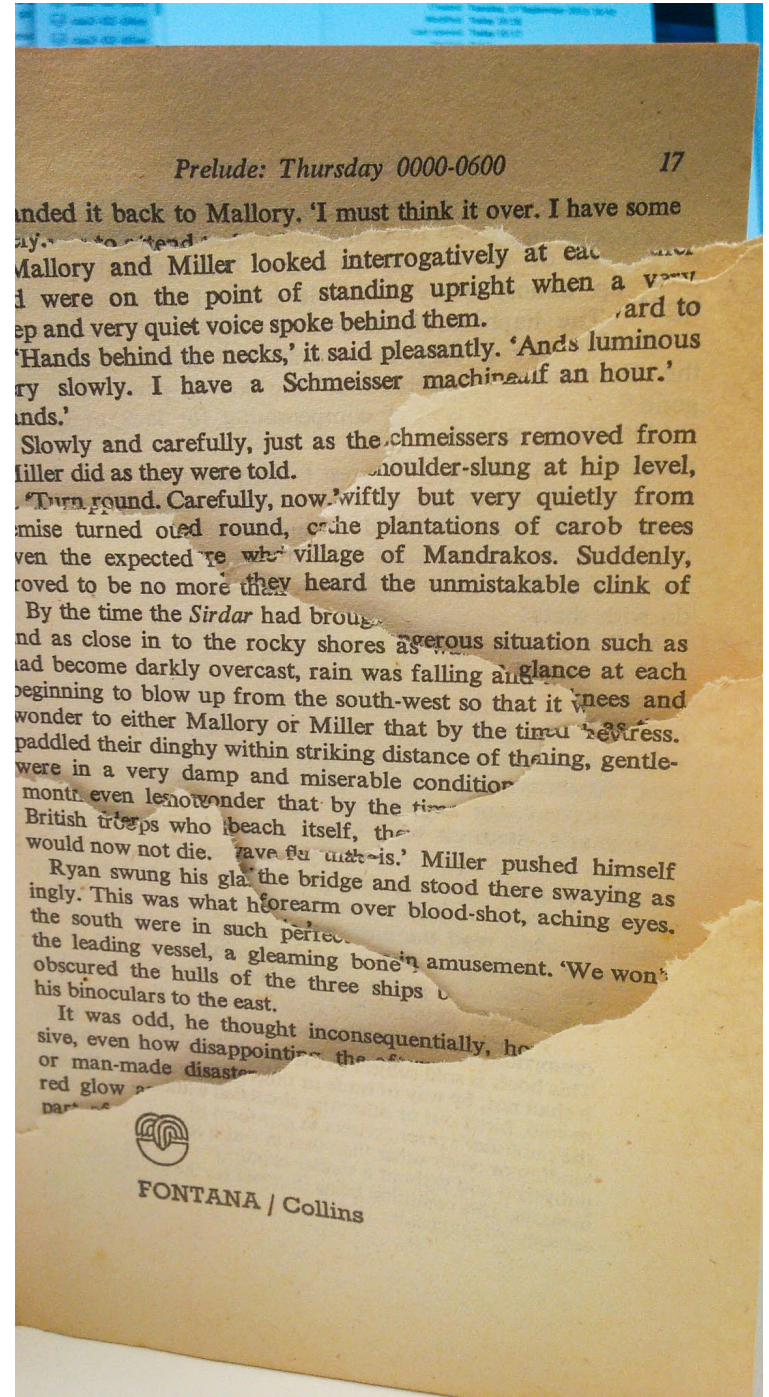
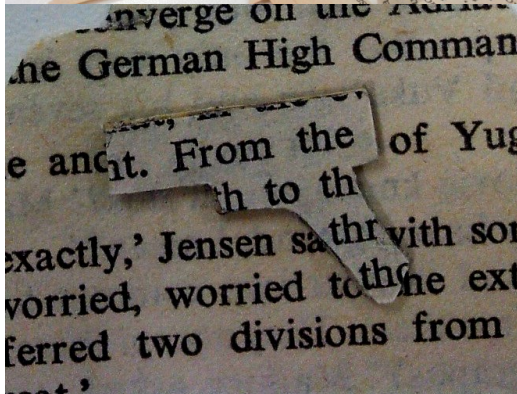
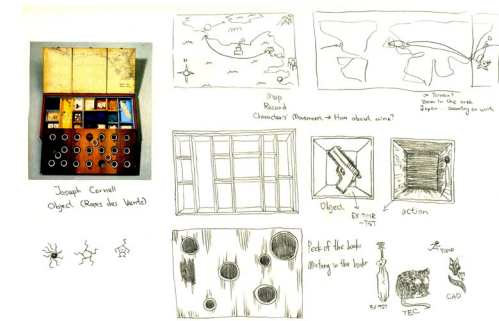
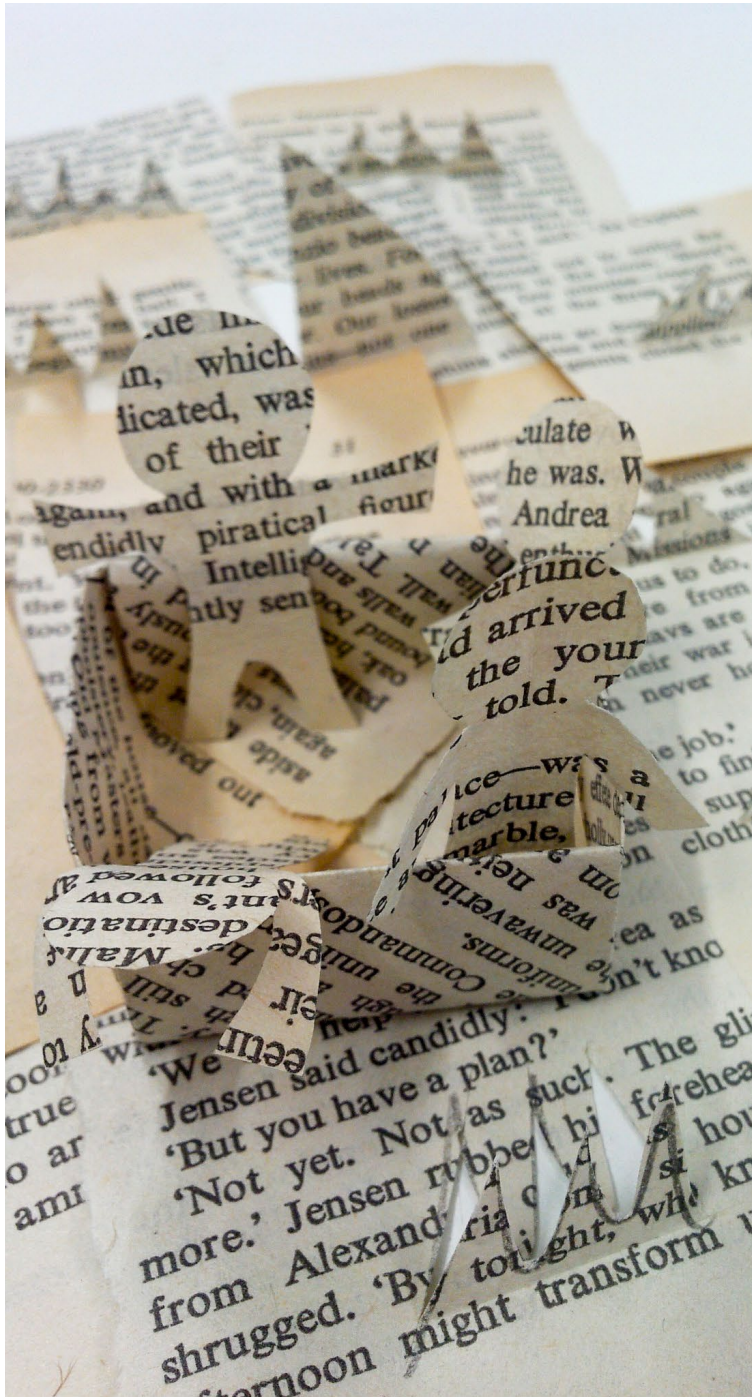
Robert Rauschenberg untitled c.1966

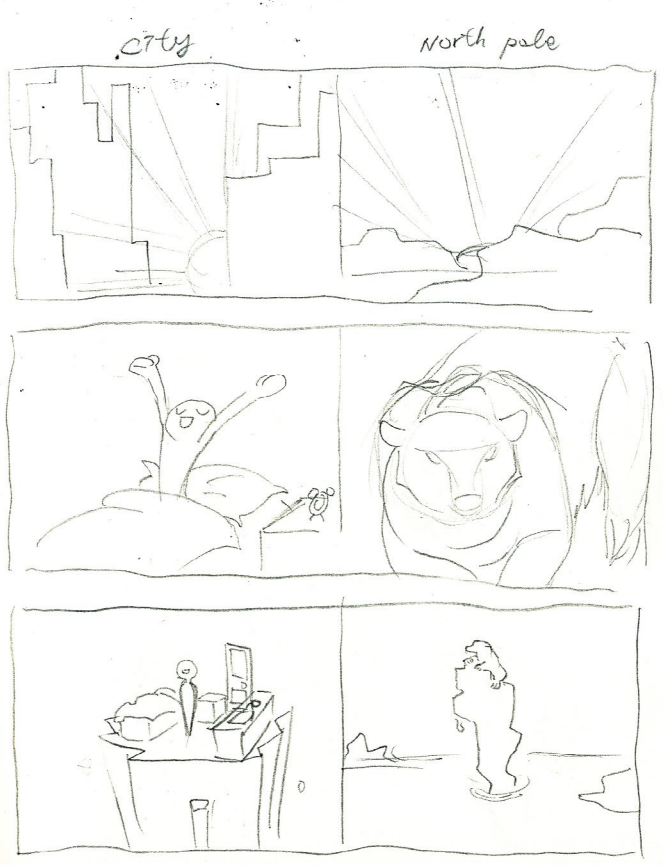
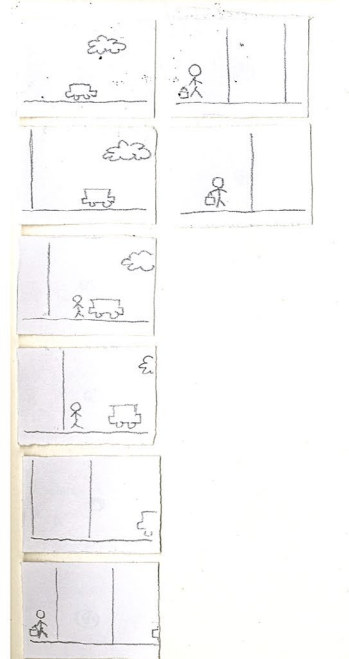
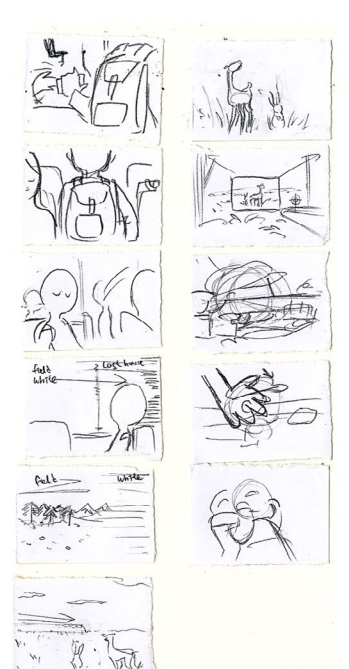
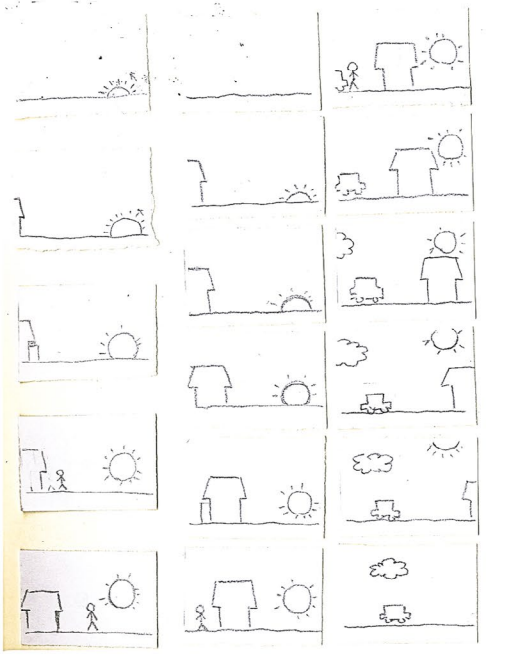


kind of classic color

Combine the thing that has the shape to build building?







# Year 2

## YCN Campaign

I attempted to make an advertisement for Interflora.  
The advertisemtn aims at younger customers.

## Huddersfield Vernacular

To present the town Huddersfield.

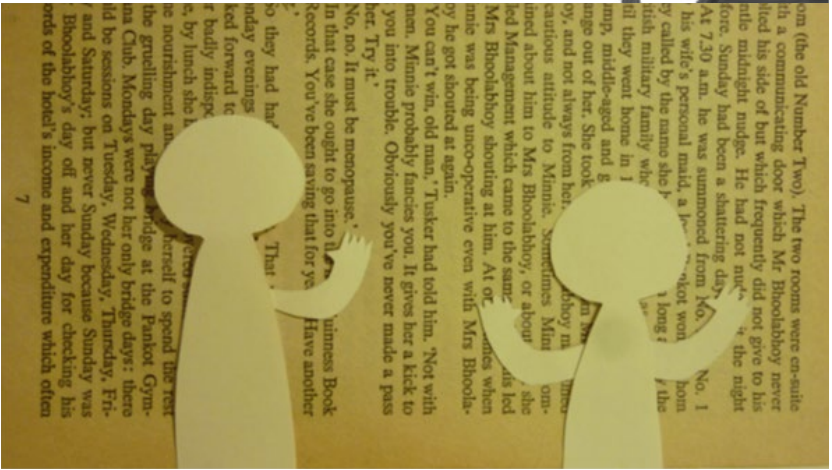
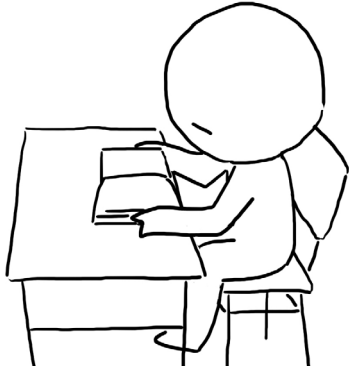
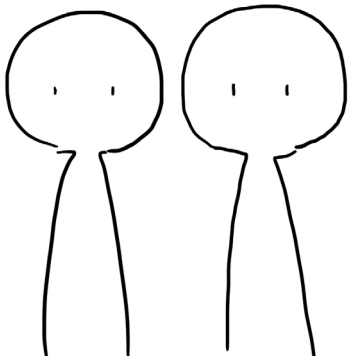
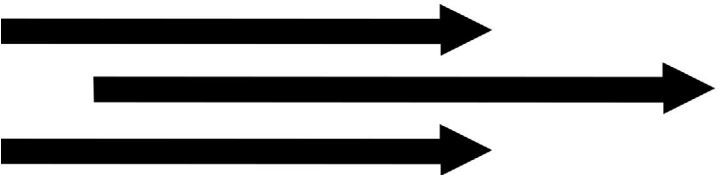
## Conversation

I thought of the presentation of delivering words and  
the conversations which words are not spoken.

Showreel:

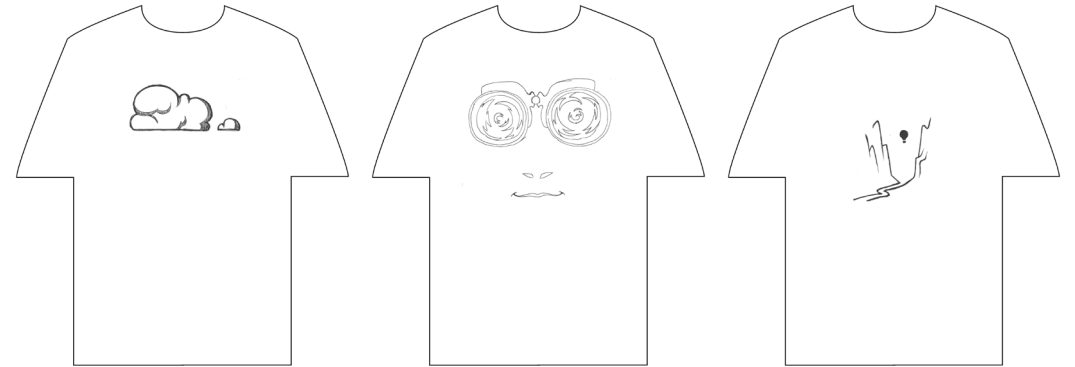
<https://vimeo.com/128072148>











**The Level Collective**  
Consider the style of the brand and design new t-shirts.



# Anime

In the book *The Anime Machine*, Thomas Lamarre introduces and discusses anime in many aspects. From theory, cultural effect, to technical consideration, the book has provided many examples to explain his perspective and in Japanese animation. As one of the influential animators in Japan and worldwide, Miyazaki Hayao's stances in many aspects are discussed as well.

## Train, Background

When cinema tends to use close compositing that locks audience's eyes to the moving object and giving a feeling of speed, anime uses open compositing to extend the vision. It is a specific method that seems to work in animation but the term of cinema. In Miyazaki Hayao's animated film, the method of open compositing is explained with the use of multiple images. As the audience's eyes follow the moving object, the background behind it is revealed gradually with the change of vision.

## Edo Japan

Edo period in Japan is frequently considered as the setting for popular culture such as anime. The historical events that happened during the time are usually adopted as story background. Consequently this also involves with the Japanese clothing and architecture during the time. It is noticeable in anime such-visual context.

## Manga

Lot of anime nowadays is based on manga, Japanese comic. It becomes important to deliver the style of manga artist's into anime in order to satisfy the audience. Animator also has to make sure that the still images in manga are translated successfully into the language of moving image. This is especially essential when the original focuses on action and high speed moving scenes.

## Flying Machine

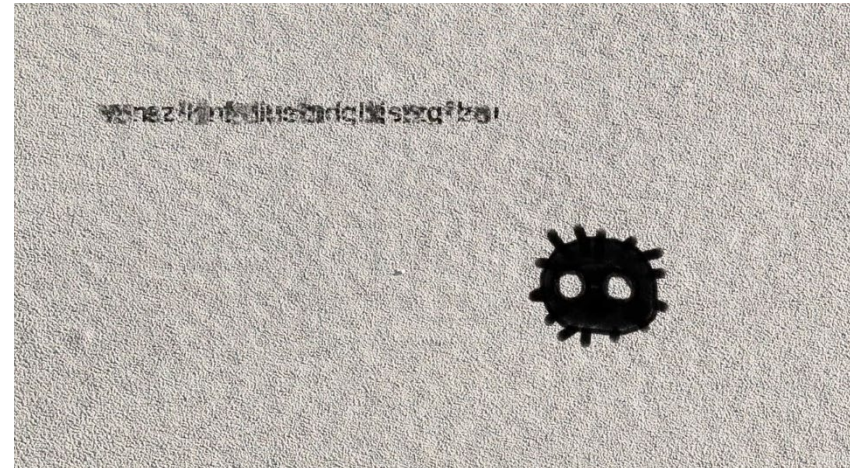
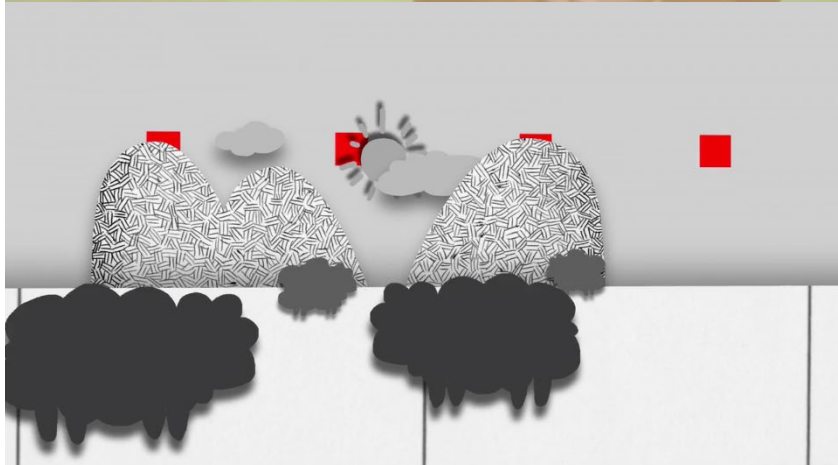
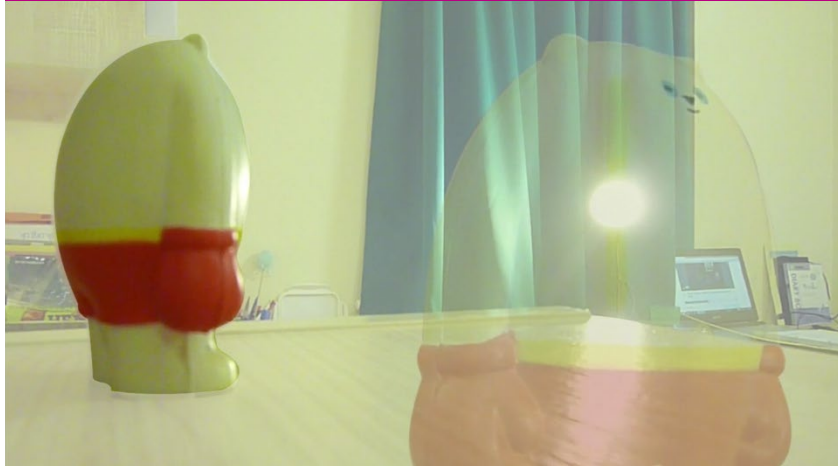
In Miyazaki Hayao's animation, technology is considered as an arguable existence. Movies such as *Castle in the Sky* are set in a world after worldwide disaster. Human are back to the lifestyle which does not involve with high techniques. Instead, some eccentric shape machine is invented. In the world of Miyazaki's anime, the technology that exists nowadays seems like a symbol of threat towards us. His film makes audience to rethink the essential of high technology.

## Children

Children and adolescent play an important role in Miyazaki's animated film. Especially when the story relates to technology and a hint of war. In reality, children usually cannot protect themselves effectively. However, their situation is reversed in Miyazaki's world. They become powerful to fight against danger and threat, meanwhile they still have an innocent heart to bravely face the difficulty.

*Train and Background* refer to Lamarre's discussion on cinematism and animation, close compositing and open compositing. The train is from the animated film *Steamboy* and the background considers the open compositing used in *Castle in the Sky*.  
*Edo Japan* which has two reviews explores the difference between anime and manga.  
*The girl in Japanese class* focuses on the main character from the animation *Millennium Actress*. The chapter is a representation of *Uta no Prince*.  
*The two children are main characters* from *Castle in the Sky*, referring to Lamarre's discussion on children's position in Miyazaki's film.  
*The flying machine* from *Castle in the Sky* is to present Miyazaki's thought towards technology.

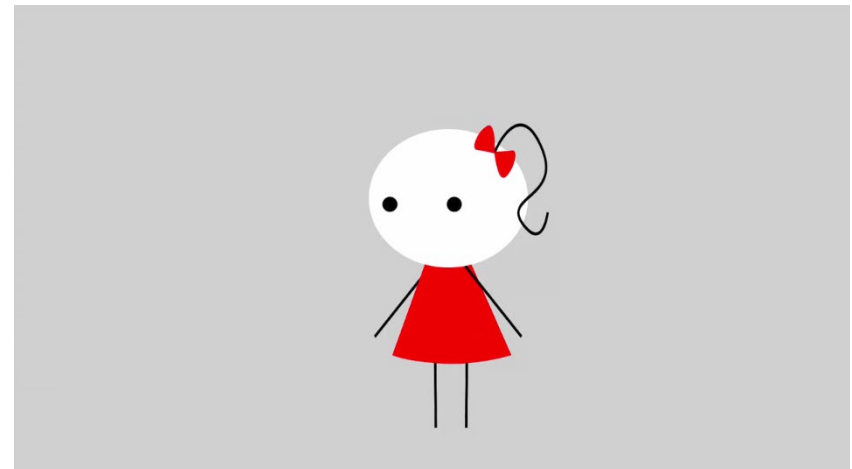
Poster  
 Create a poster based on the essay written.

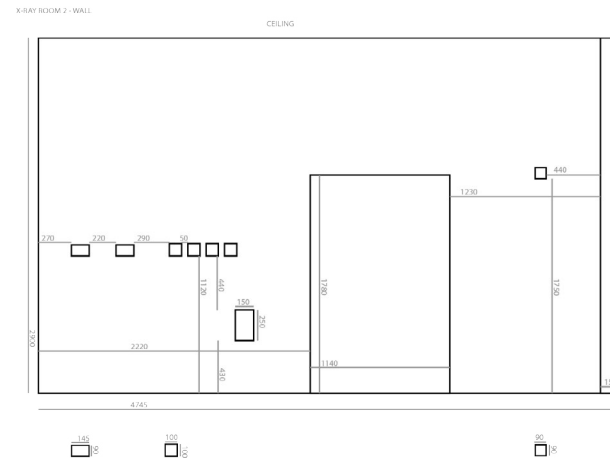
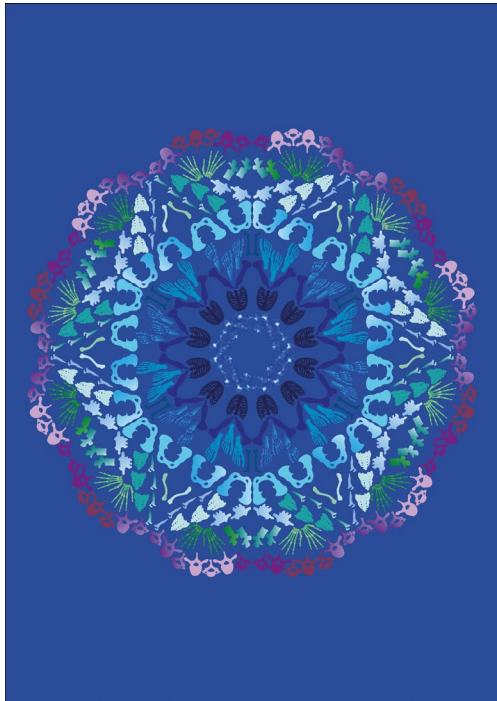


## Workshop

Additional works while in university workshop.

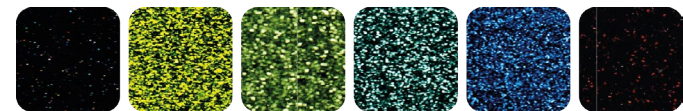
<https://vimeo.com/125687781>

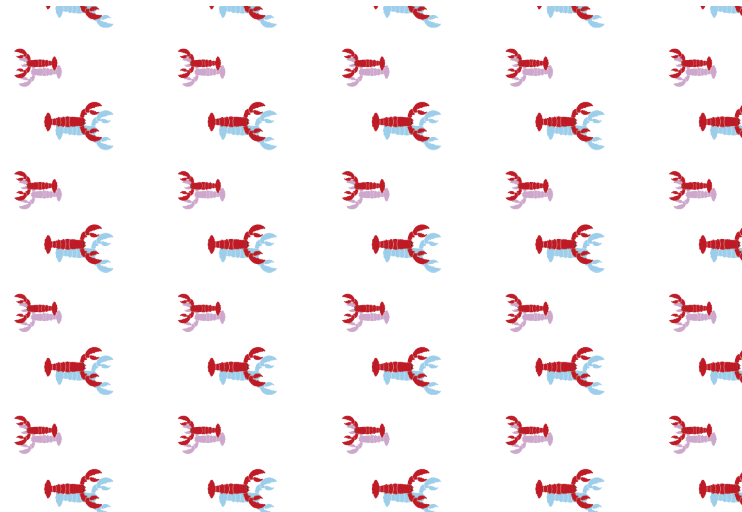
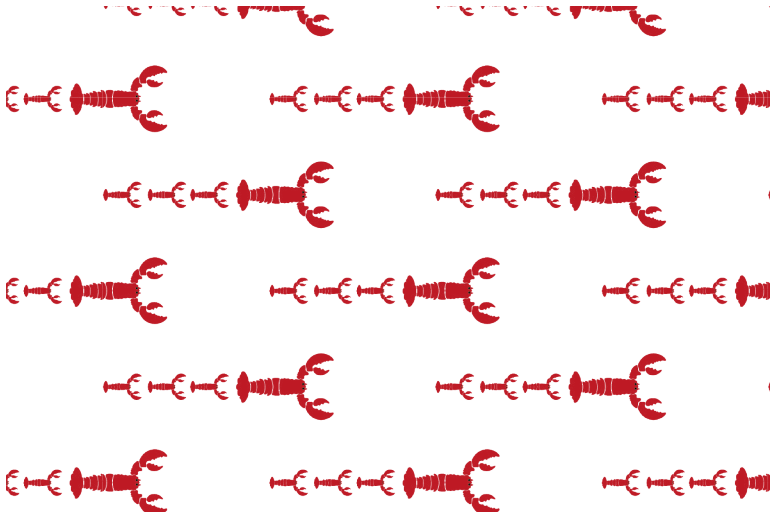




## Placement Year

At Tatty Devine, I help creating graphics for the designer to use. Meaning while improving the data-base for better quality and accessibility.





INOPQRS  
VWXYZABC  
DEFGHIJK  
INOPQRS  
VWXYZABC

A  
E  
G  
H  
L  
O  
F  
I

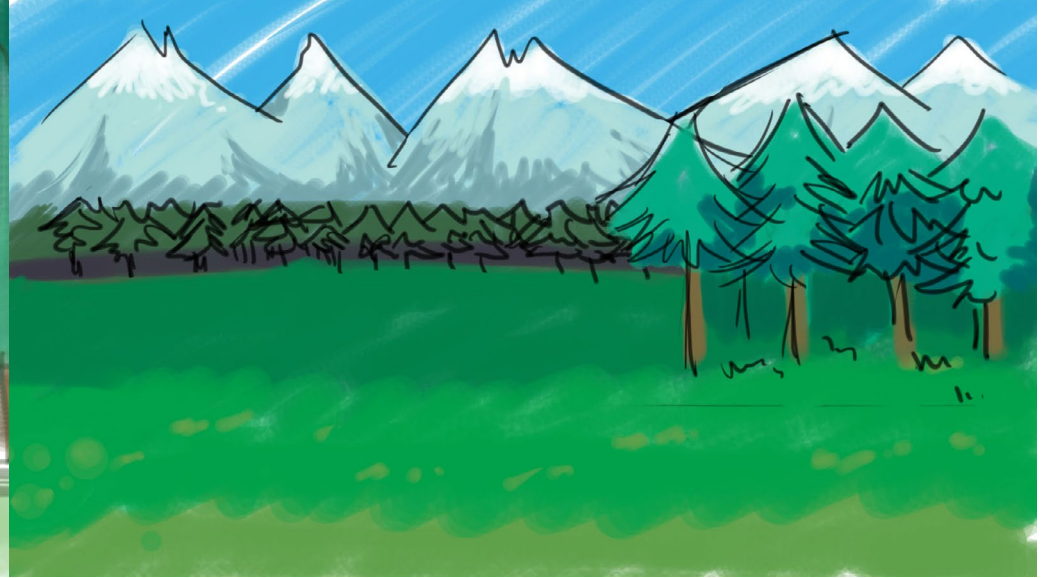
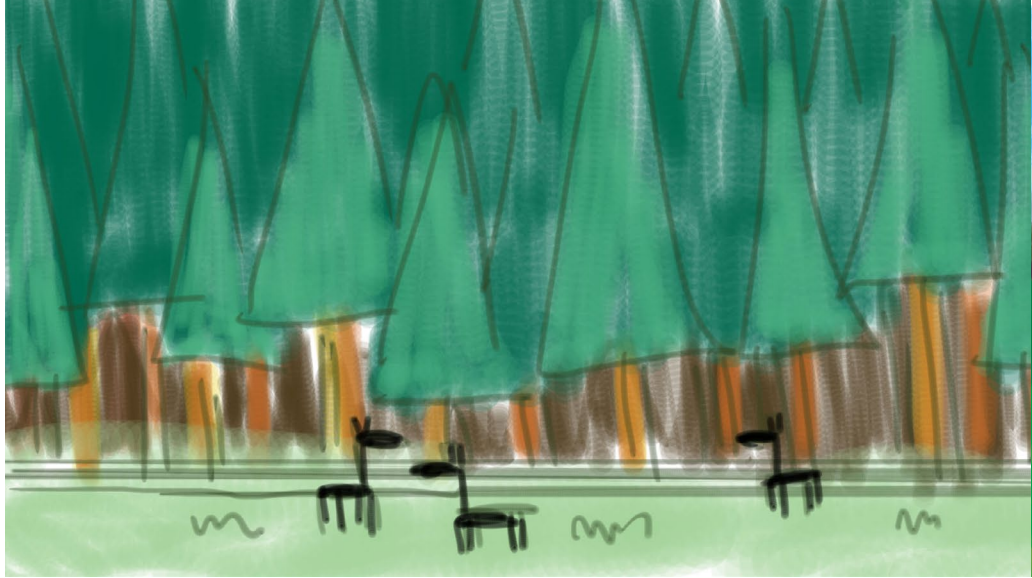
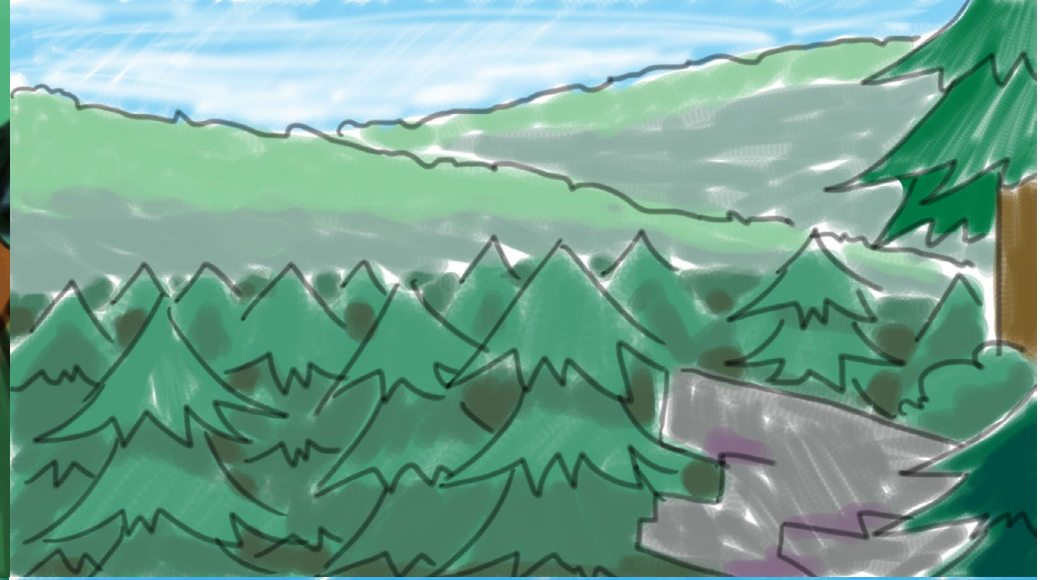
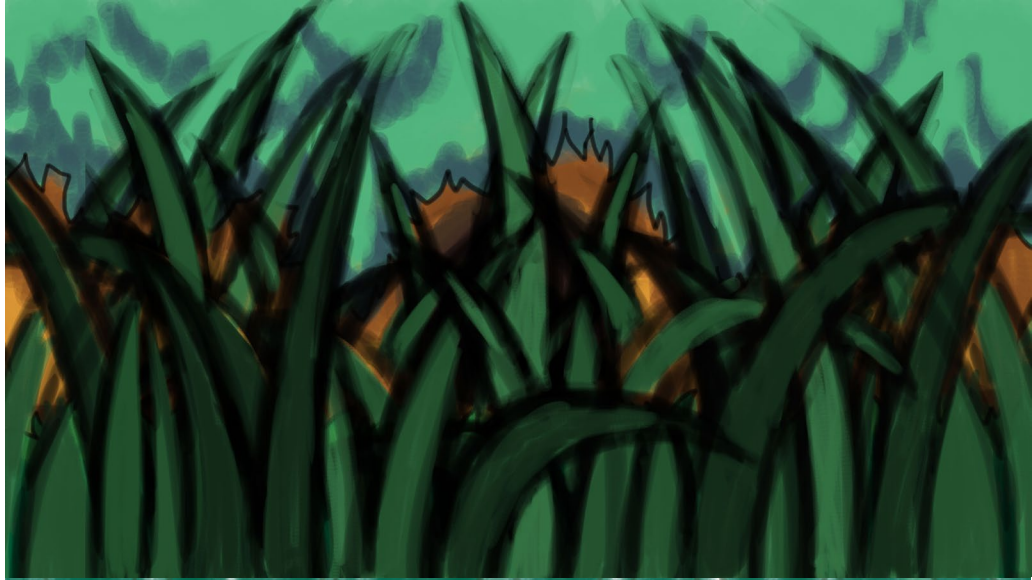
# Off-Campus Projects

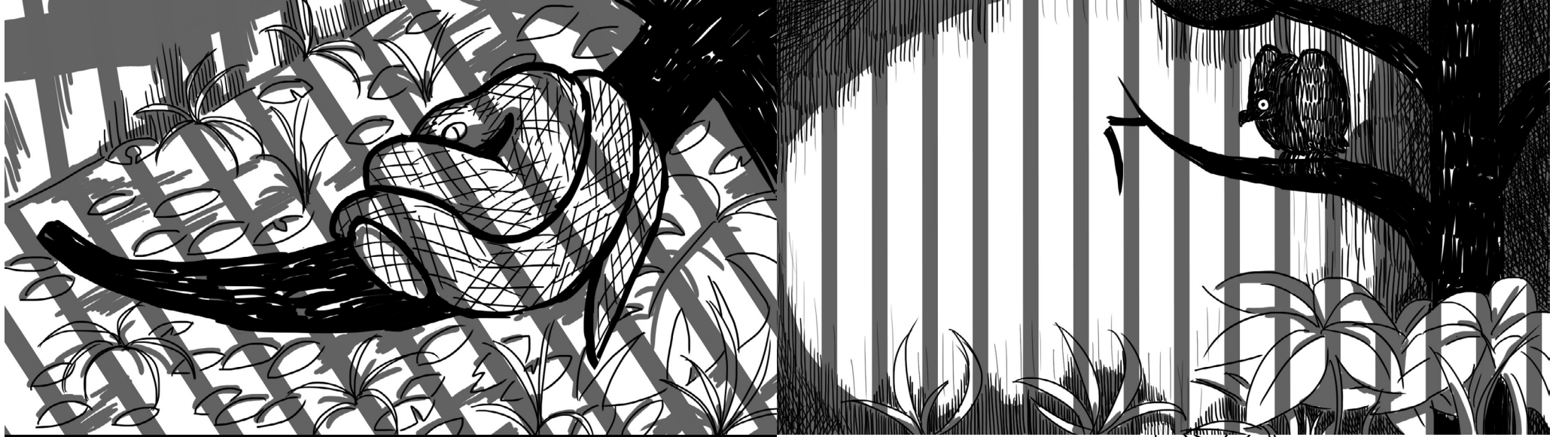
I am participating in two animation projects. Both of them are at the stages of making storyboard.

## The Unspoken Voice

<https://www.facebook.com/The-Unspoken-Voices-1416750015303612/videos>

Sad Zoo







# Personal Works

Sometimes I am inspired by small things and want to complete it as soon as possible.

## Smile

<https://sophiaan0yr2.files.wordpress.com/2014/10/newte79a84e7ac91e5aeb92cp.gif>

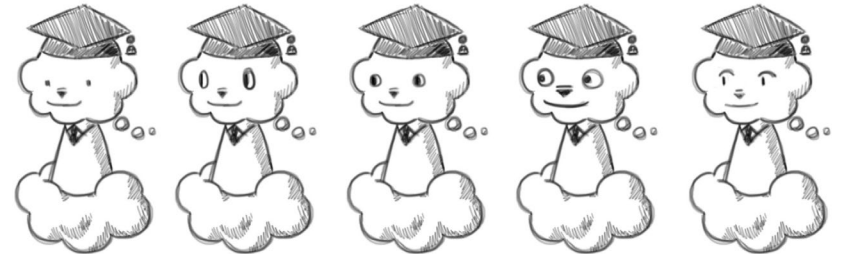
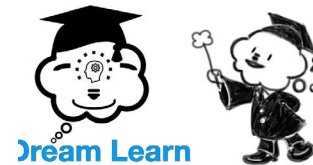
## Character Design

Designed a character based on the logo of an application built by a friend.

## Boots

Inspired by the shape of the cut wood when I was in placement with Lee Borthwick.

[https://www.instagram.com/p/BAs\\_uszGjsz/](https://www.instagram.com/p/BAs_uszGjsz/)



# Pong-Hsuan Li

University of Huddersfield

[u1276979@unimail.hud.ac.uk](mailto:u1276979@unimail.hud.ac.uk)

<https://sophiaan0yr2.wordpress.com/>

<http://sophiaan0.wordpress.com/>